



# Articulations de portails

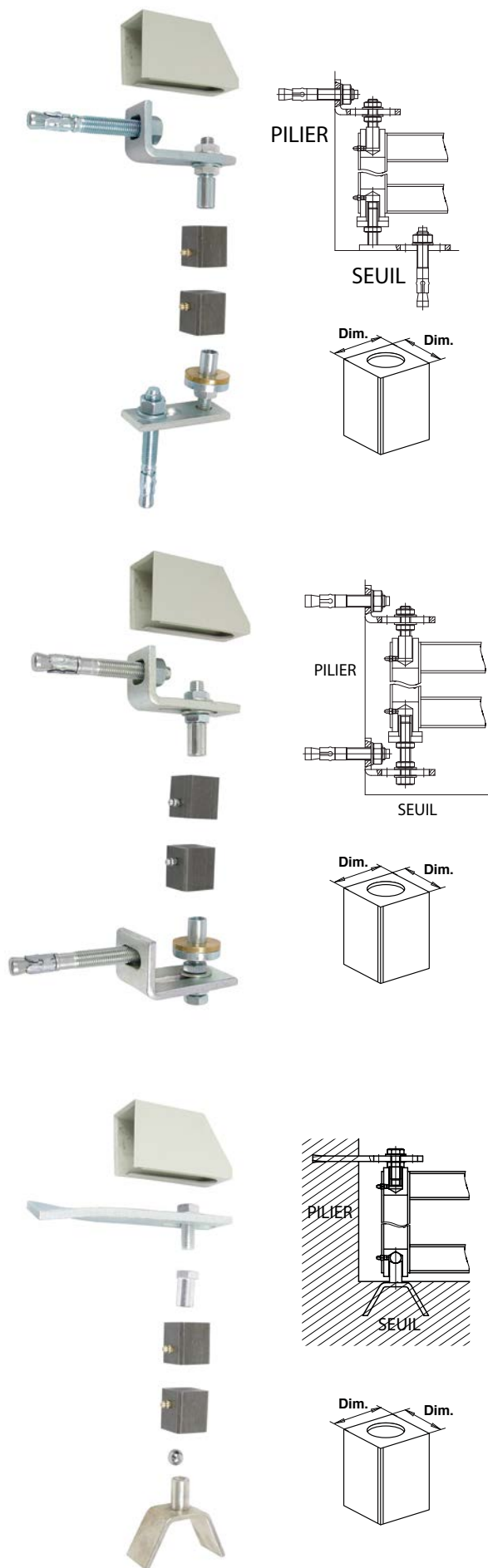


## Caractéristiques



Faure et Fils® vous propose toute une gamme d'articulation de portails.

L'important choix de modèles ainsi que leurs possibilités de réglages leurs permettent de s'adapter à tous types de poses.



Disponibles pour portails bois ou métalliques.





**PIVOT1..** Pivot 100 à cheiller

Code		Dim.	Charge max /vantail	Tarif HT en €		Cat.
PIVOT140	BRUT	40x40	150 kg	72,89	1	2
PIVOT150	BRUT	50x50	150 kg	82,75	1	2

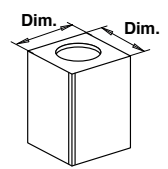
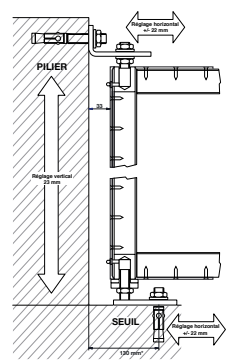
**PIVOT3..** Pivot 300 à cheiller

Code		Dim.	Charge max /vantail	Tarif HT en €		Cat.
PIVOT340	BRUT	40x40	150 kg	123,49	1	2
PIVOT350	BRUT	50x50	150 kg	141,66	1	2

**PIVOT4..** Pivot 400 à sceller

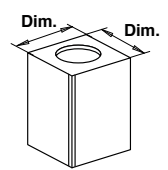
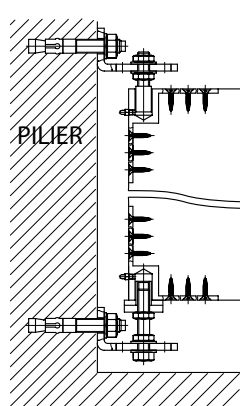
Code		Dim.	Charge max /vantail	Tarif HT en €		Cat.
PIVOT440	BRUT	40x40	150 kg	52,42	1	2
PIVOT450	BRUT	50x50	150 kg	61,26	1	2

Ferrures pour portails bois



PIEBCH.. Pivot 500

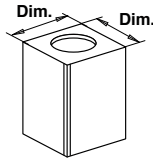
Code	Color	Dim.	Charge max /vantail	Tarif HT en €	Icon	Cat.
PIEBCH500	BRUT	40x40	150 kg	142,68	1	4



PIVOT5.. Pivot 510

Code	Color	Dim.	Charge max /vantail	Tarif HT en €	Icon	Cat.
PIVOT510	BRUT	40x40	150 kg	97,18	1	4

Ferrures pour portails bois



PIVOT8.. Pivot 800 avec chevilles

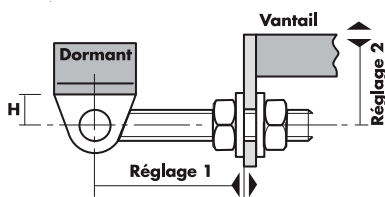
Code		Dim.	Tarif HT en €		Cat.
PIVOT840	BRUT	40x40	78,90	1	2
PIVOT850	BRUT	50x50	88,42	1	2



A1800.. Capot plastique

Code		Tarif HT en €		Cat.
A180000	BRUT	8,54	1	2

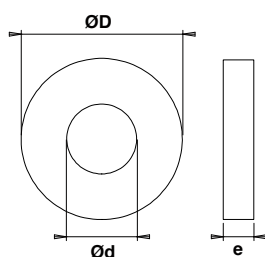
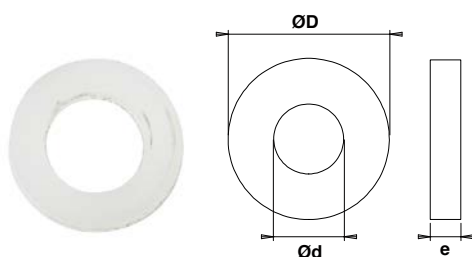
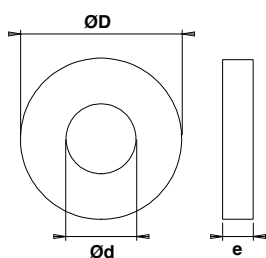
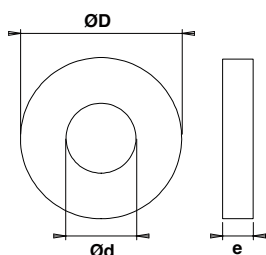
Ferrures pour portails métalliques





CL000.. IDEFIX® - Articulation de portail - Bague laiton

Code		H	L fileté	Ø Tige fileté	Dim. bague laiton	Réglage E1	Réglage E2	Charge max /Pivot	Tarif HT en €		Dispo. (sem.)
CL00000	BRUT	25	80	12	12x22x8	50	13	50 kg	59,83	2	STOCKÉ
CL00010	BRUT	28	90	16	16x30x9	50	16	60 kg	110,35	2	STOCKÉ
CL00020	BRUT	36	110	20	20x38x9	60	22	75 kg	172,33	2	STOCKÉ
CL00030	BRUT	36	140	24	24x46x9	80	22	85 kg	219,11	2	STOCKÉ



## Bagues





## BL.. Bague laiton

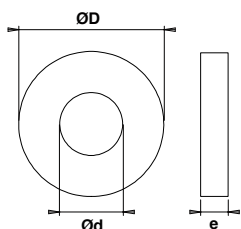
Code		Ød x ØD x e	Tarif HT en €		Cat.
BL051002S	BRUT	05,6x10x2	0,59	10	2
BL061102S	BRUT	6,1x11x2	0,83	10	2
BL061302S	BRUT	6,7x13,5x2,8	1,16	10	2
BL071302S	BRUT	7,1x13x2,5	0,83	10	2
BL071303S	BRUT	7,1x13x3	0,83	10	2
BL071503S	BRUT	7,6x15x3	1,35	10	2
BL071604S	BRUT	7,7x16,5x4,5	2,42	10	2
BL081203S	BRUT	8,1x12x3	0,78	10	2
BL081503S	BRUT	8,1x15x3,5	1,44	10	2
BL081603S	BRUT	8,1x16x3	1,44	10	2
BL081804S	BRUT	8,1x18x4,5	2,42	10	2
BL082005S	BRUT	8,7x20x5	3,01	10	2
BL091403S	BRUT	9,1x14x03,5	1,84	10	2
BL091603S	BRUT	9,1x16x3	1,25	10	2
BL091604S	BRUT	9,1x16,6x4	1,84	10	2
BL092105S	BRUT	9,1x21x5	3,37	10	2
BL111704S	BRUT	11,1x17x4	2,27	10	2
BL101804S	BRUT	10,1x18,5x4	2,27	10	2
BL112004S	BRUT	11,1x20x4,5	2,66	10	2
BL112204S	BRUT	11,2x22x4	2,66	10	2
BL132004S	BRUT	13,2x20x4	3,96	10	2
BL142305S	BRUT	14,2x23x5	2,66	10	2
BL142605S	BRUT	14,2x26x5	4,02	10	2
BL152205S	BRUT	15,2x22x5	2,66	10	2

## BIO.. Bague inox

Code		Ød x ØD x e	Tarif HT en €		Cat.
BI061002S	INOX	6,15x10x2	1,35	10	2
BI071302S	INOX	7,1x13x2,5	1,53	10	2
BI081403S	INOX	8,2x14x3	1,89	10	2
BI091603S	INOX	9,1x16x3	1,92	10	2

## BNO.. Bague nylon

Code		Ød x ØD x e	Tarif HT en €		Cat.
BN071102S	BRUT	7,1x11,5x2	0,46	10	2
BN071302S	BRUT	7,7x13,5x2,5	0,61	10	2



**BB.. Butée à billes**

Code	Z.BLANC	Ød x ØD x e.	Tarif HT en €		Cat.
BB071607ZS	Z.BLANC	7,7x16,5x7	2,35	10	2
BB081807S	Z.BLANC	8,2x18,5x7	6,36	10	2
BB082007ZS	Z.BLANC	8,7x20x7	2,42	10	2
BB091707S	Z.BLANC	9,2x17,5x7	2,42	10	2
BB102007S	Z.BLANC	10,2x20x7	2,45	10	2
BB112007S	Z.BLANC	11,3x20x7,2	2,53	10	2
BB142308S	Z.BLANC	14,2x23x8	2,59	5	2
BB142508S	Z.BLANC	14,3x25x8,5	2,59	5	2

Code	DESIGNATION	PRODUITS CORRESPONDANTS
BI061002S	BAGUE INOX 6,15X10X2 /SAC10	MA60IBII
BI071302S	BAGUE INOX 7,1X13X2,5 /SAC10	MA80IBII
BI081403S	BAGUE INOX 8,2X14X3 /SAC10	FFI1407CD/G
BI091603S	BAGUE INOX 9,1X16X3 /SAC10	MA100IBII, MA120IBII
BL051002S	BAGUE LAITON 05,6X10X2 /SAC10	MA60ABLA
BL061102S	BAGUE LAITON 6,1X11X2/SAC10	GRL066BLC/D/G
BL061302S	BAGUE LAITON 6,7X13,5X2,8 /SAC10	FR1106CD/G, FR14055CD/G, FR1406CD/G
BL071302S	BAGUE LAITON 7,1X13X2,5 /SAC10	MA80ABL, MS80ABLA
BL071303S	BAGUE LAITON 7,1X13X3 /SAC10	GRL087BLC/D/G
BL071503S	BAGUE LAITON 7,6X15X3 /SAC10	FF autres dimensions
BL071604S	BAGUE LAITON 7,7X16,5X4,5 /SAC10	PI146RD/G, PI166RD/G, PI1681CD/G, PI1981CD/G
BL081203S	BAGUE LAITON 8,1X12X3 /SAC10	GRD068BLC/D/G
BL081503S	BAGUE LAITON 8,1X15X3,5 /SAC10	GPS06BLC/D/G, GPS07BLC/D/G? GPS08BLC/D/G
BL081603S	BAGUE LAITON 8,1X16X3 /SAC10	GRL108BLC/D/G
BL081804S	BAGUE LAITON 8,1X18X4,5 /SAC10	PI147CD/G, PI32830D/G, PI197CD/G
BL082005S	BAGUE LAITON 8,7X20X5 /SAC10	PI168CD/G, PI228CD/G, PI198CD/G
BL091604S	BAGUE LAITON 9,1X16,6X4 /SAC10	GPS09BLC/D/G, GPS10BLC/D/G
BL091603S	BAGUE LAITON 9,1X16X3 /SAC10	MS120ABLA, MS135ABLA
BL092105S	BAGUE LAITON 9,1X21X5 /SAC10	PI259CD/G
BL091403S	BAGUE LAITON CHT ROND 9,1X14X03,5 /SAC10	GRD089BLC/D/G
BL101804S	BAGUE LAITON 10,1X18,5X4 /SAC10	GPS12BLC/D/G, GPS14BLC/D/G
BL111704S	BAGUE LAITON 11,1X17X4 /SAC10	GRD101BLC/D/G
BL112004S	BAGUE LAITON 11,1X20X4,5 /SAC10	GPL10BLC/D/G, GPL12BLC/D/G
BL112204S	BAGUE LAITON 11,2X22X4 /SAC10	GRL121BLC/D/G, GRL141BLC/D/G
BL132004S	BAGUE LAITON 13,2X20X4 /SAC10	GRD123BLC/D/G
BL142305S	BAGUE LAITON 14,2X23X5 /SAC10	MA180ABLA, MA200ABLA
BL142605S	BAGUE LAITON 14,2X26X5 /SAC10	GPL14BLC/D/G, GPL16BLC/D/G, GP322BLC
BL152205S	BAGUE LAITON 15,2X22X5 /SAC10	GRD125BLC/D/G, GRD145BLC/D/G
BN071102S	BAGUE NYLON 7,1X11,5X2 /SAC10	SL851
BN071302S	BAGUE NYLON 7,7X13,5X2,5 /SAC10	SL1001
BB071607ZS	BUTEE BILLES 07,7X16,5X07 ZBL /SAC10	PI146RD/G, PI166RD/G, PI1681CD/G, PI1981CD/G
BB081807S	BUTEE BILLES 08,2X18,5X07 /SAC10	PI147CD/G, PI32830D/G, PI197CD/G
BB082007ZS	BUTEE BILLES 08,7X20X07 ZBL /SAC10	PI168CD/G, PI228CD/G, PI198CD/G
BB091707S	BUTEE BILLES 09,2X17,5X07 /SAC10	MS120ABLA, MS135ABLA, MA100ABLA, MA120ABLA, GPS09BLC/D/G, GPS10BLC/D/G
BB102007S	BUTEE BILLES 10,2X20X07 /SAC10	GPS12BLC/D/G, GPS14BLC/D/G
BB112007S	BUTEE BILLES 11,3X20X07,2 /SAC10	GPL10BLC/D/G, GPL12BLC/D/G
BB142308S	BUTEE BILLES 14,2X23X08 /SAC5	MA180ABLA, MA200ABLA
BB142508S	BUTEE BILLES 14,3X25X08,5 /SAC5	GPL14BLC/D/G, GPL16BLC/D/G, GP322BLC



**MALBLBB Mallette de bagues et butées pour menuiseries acier**

Code	Tarif HT en €		Cat.
MALBLBB	196,50	1	2

## Accessoires, pattes à pointes

**BOUCHP..** Bouchon polyéthylène

Code		Dim.	Tarif HT en €		Cat.
BOUCHPM80N		7X13X6,5	0,27	1	2
BOUCHPM12N		9X15X6,4	0,42	1	2
BOUCHPM14N		11X16X5	0,42	1	2

**GRS6X..** Graisseur

Code		Dim.	Tarif HT en €		Cat.
GRS6X100A0	Z.BLANC	M6x100	2,16	1	2

**VSL85..** Vis pour Sanlam

Code		Tarif HT en €		Cat.
VSL851000	BRUT	0,25	1	Nous consulter

**PP..** Patte à pointes droites

Code		L	Tarif HT en €		Cat.
PP60	Z.BLANC	60	1,49	100	2
PP80	Z.BLANC	80	1,84	100	2
PP100	Z.BLANC	100	2,12	100	2
PP120	Z.BLANC	120	2,32	100	2
PP140	Z.BLANC	140	2,73	50	2

**PP..** Patte à pointes coudées

Code		L	Tarif HT en €		Cat.
PP60ZC	Z.BLANC	60	1,77	100	2
PP80ZC	Z.BLANC	80	2,16	100	2
PP100ZC	Z.BLANC	100	2,48	100	2
PP120ZC	Z.BLANC	120	2,77	100	2
PP140ZC	Z.BLANC	140	3,16	50	2