

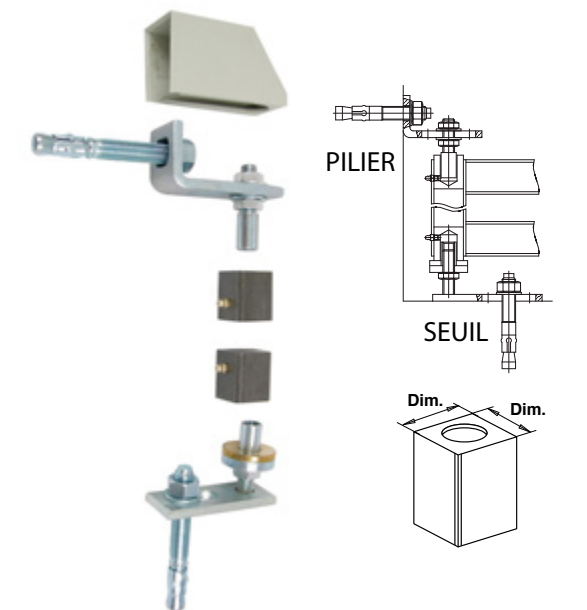


## Caractéristiques



Faure et Fils® vous propose toute une gamme d'articulation de portails.

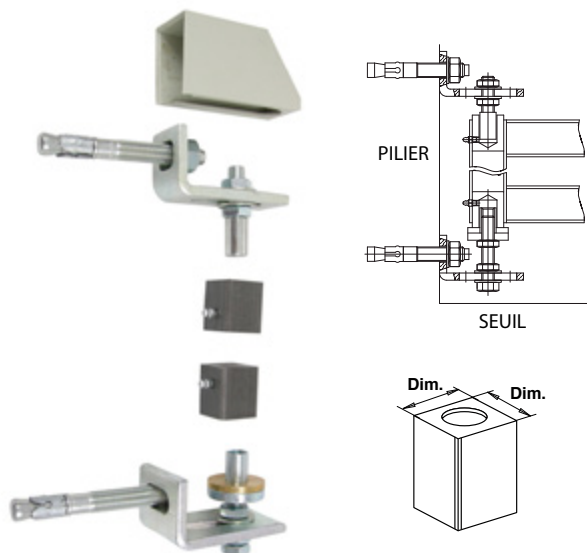
Le choix important de modèles ainsi que leurs possibilités de réglages leurs permettent de s'adapter à tous types de poses.

Disponibles pour portails bois ou métalliques.





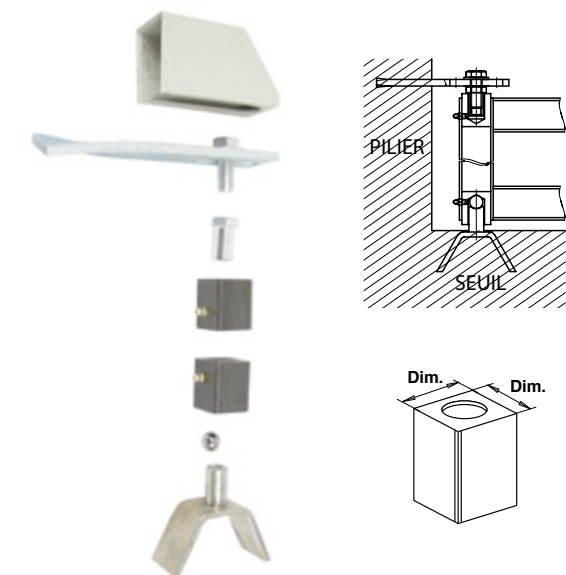
**PIVOT100..** Pivot 100 à cheviller

| Code     |  | Dim.  | Charge max /vantail |  | Cat. |
|----------|---|-------|---------------------|---|------|
| PIVOT140 | BRUT  | 40x40 | 150 kg              | 1   | 2    |
| PIVOT150 | BRUT  | 50x50 | 150 kg              | 1   | 2    |





**PIEM300..** Pivot 300 à cheviller

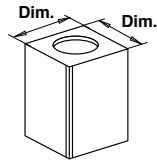
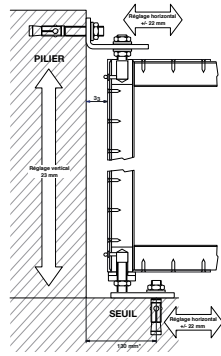
| Code     |  | Dim.  | Charge max /vantail |  | Cat. |
|----------|---|-------|---------------------|---|------|
| PIEM3040 | BRUT  | 40x40 | 150 kg              | 1   | 2    |
| PIEM3050 | BRUT  | 50x50 | 150 kg              | 1   | 2    |





**PIEM400..** Pivot 400 à sceller

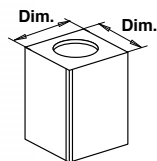
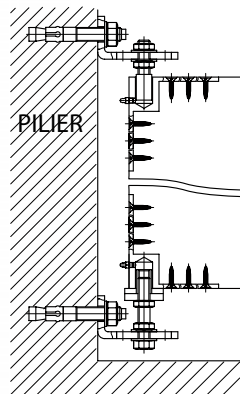
| Code     |  | Dim.  | Charge max /vantail |  | Cat. |
|----------|---|-------|---------------------|---|------|
| PIEM4040 | BRUT  | 40x40 | 150 kg              | 1   | 2    |
| PIEM4050 | BRUT  | 50x50 | 150 kg              | 1   | 2    |

Ferrures pour portails bois





**PIVOT500** Pivot 500

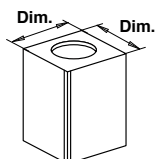
| Code     |  | Dim.  | Charge max /vantail |  | Cat. |
|----------|---|-------|---------------------|---|------|
| PIVOT500 | BRUT  | 40x40 | 150 kg              | 1   | 4    |



**PIVOT510** Pivot 510

| Code     |  | Dim.  | Charge max /vantail |  | Cat. |
|----------|---|-------|---------------------|---|------|
| PIVOT510 | BRUT  | 40x40 | 150 kg              | 1   | 4    |

Ferrures pour portails bois



PIVOT8.. Pivot 800 avec chevilles

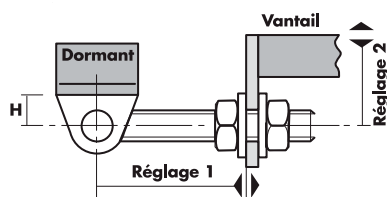
| Code     |      | Dim.  |   | Cat. |
|----------|------|-------|---|------|
| PIVOT840 | BRUT | 40x40 | 1 | 2    |
| PIVOT850 | BRUT | 50x50 | 1 | 2    |



A180000 Capot pour pivots à sceller ou à chevilla

| Code    |      | L   | l  | H  |   | Cat. |
|---------|------|-----|----|----|---|------|
| A180000 | BRUT | 105 | 40 | 61 | 1 | 2    |

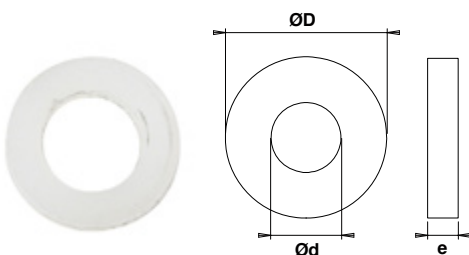
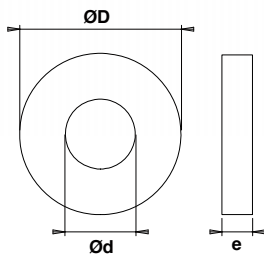
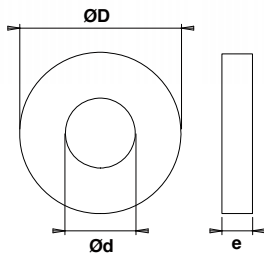
Ferrures pour portails métalliques



CL000.. IDEFIX® - Articulation de portail - Bague laiton

| Code    |      | H  | L<br>filetée | Ø Tige<br>filetée | Dim.<br>bague<br>laiton | Réglage<br>E1 E2 | Charge max<br>/Pivot |   | Cat. |
|---------|------|----|--------------|-------------------|-------------------------|------------------|----------------------|---|------|
| CL00000 | BRUT | 25 | 80           | 12                | 12x22x8                 | 50 13            | 50 kg                | 1 | 2    |
| CL00010 | BRUT | 28 | 90           | 16                | 16x30x9                 | 50 16            | 60 kg                | 1 | 2    |
| CL00020 | BRUT | 36 | 110          | 20                | 20x38x9                 | 60 22            | 75 kg                | 1 | 2    |
| CL00030 | BRUT | 36 | 140          | 24                | 24x46x9                 | 80 22            | 85 kg                | 1 | 2    |

## Bagues



## BL.. Bague laiton

| Code      |      | Ød   | ØD   | e   |    | Cat. |
|-----------|------|------|------|-----|----|------|
| BL051002S | BRUT | 5,6  | 10   | 2   | 10 | 2    |
| BL061102S | BRUT | 6,1  | 11   | 2   | 10 | 2    |
| BL061302S | BRUT | 6,7  | 13,5 | 2,8 | 10 | 2    |
| BL071302S | BRUT | 7,1  | 13   | 2,5 | 10 | 2    |
| BL071303S | BRUT | 7,1  | 13   | 3   | 10 | 2    |
| BL071503S | BRUT | 7,6  | 15   | 3   | 10 | 2    |
| BL071604S | BRUT | 7,7  | 16,5 | 4,5 | 10 | 2    |
| BL081203S | BRUT | 8,1  | 12   | 3   | 10 | 2    |
| BL081503S | BRUT | 8,1  | 15   | 3,5 | 10 | 2    |
| BL081603S | BRUT | 8,1  | 16   | 3   | 10 | 2    |
| BL081804S | BRUT | 8,1  | 18   | 4,5 | 10 | 2    |
| BL082005S | BRUT | 8,7  | 20   | 5   | 10 | 2    |
| BL091403S | BRUT | 9,1  | 14   | 3,5 | 10 | 2    |
| BL091603S | BRUT | 9,1  | 16   | 3   | 10 | 2    |
| BL091604S | BRUT | 9,1  | 16,6 | 4   | 10 | 2    |
| BL092105S | BRUT | 9,1  | 21   | 5   | 10 | 2    |
| BL111704S | BRUT | 11,1 | 17   | 4   | 10 | 2    |
| BL101804S | BRUT | 10,1 | 18,5 | 4   | 10 | 2    |
| BL112004S | BRUT | 11,1 | 20   | 4,5 | 10 | 2    |
| BL112204S | BRUT | 11,2 | 22   | 4   | 10 | 2    |
| BL132004S | BRUT | 13,2 | 20   | 4   | 10 | 2    |
| BL142305S | BRUT | 14,2 | 23   | 5   | 10 | 2    |
| BL142605S | BRUT | 14,2 | 26   | 5   | 10 | 2    |
| BL152205S | BRUT | 15,2 | 22   | 5   | 10 | 2    |

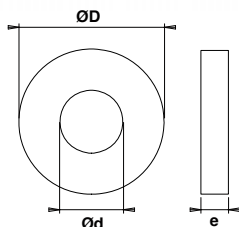
## BIO.. Bague inox

| Code      |      | Ød   | ØD | e   |    | Cat. |
|-----------|------|------|----|-----|----|------|
| BI061002S | INOX | 6,15 | 10 | 2   | 10 | 2    |
| BI071302S | INOX | 7,1  | 13 | 2,5 | 10 | 2    |
| BI081403S | INOX | 8,2  | 14 | 3   | 10 | 2    |
| BI091603S | INOX | 9,1  | 16 | 3   | 10 | 2    |

## BN071.. Bague nylon

| Code      |      | Ød  | ØD   | e   |    | Cat. |
|-----------|------|-----|------|-----|----|------|
| BN071102S | BRUT | 7,1 | 11,5 | 2   | 10 | 2    |
| BN071302S | BRUT | 7,7 | 13,5 | 2,5 | 10 | 2    |

## Bagues, butées



## BB.. Butée à billes

| Code       |         | Ød   | ØD   | e   |    | Cat. |
|------------|---------|------|------|-----|----|------|
| BB071607ZS | Z.BLANC | 7,7  | 16,5 | 7   | 10 | 2    |
| BB081807S  | Z.BLANC | 8,2  | 18   | 7   | 10 | 2    |
| BB082007ZS | Z.BLANC | 8,7  | 20   | 7   | 10 | 2    |
| BB091707S  | Z.BLANC | 9,2  | 17,5 | 7   | 10 | 2    |
| BB102007S  | Z.BLANC | 10,2 | 20   | 7   | 10 | 2    |
| BB112007S  | Z.BLANC | 11,3 | 20   | 7,2 | 10 | 2    |
| BB142308S  | Z.BLANC | 14,2 | 23   | 8   | 5  | 2    |
| BB142508S  | Z.BLANC | 14,3 | 25   | 8,5 | 5  | 2    |

| Code       | DESIGNATION                              | PRODUITS CORRESPONDANTS  |
|------------|--|--|
| BI061002S  | BAGUE INOX 6,15X10X2 /SAC10              | MA60IBII   |
| BI071302S  | BAGUE INOX 7,1X13X2,5 /SAC10             | MA80IBII   |
| BI081403S  | BAGUE INOX 8,2X14X3 /SAC10               | FF11407CD/G  |
| BI091603S  | BAGUE INOX 9,1X16X3 /SAC10               | MA100IBII, MA120IBII   |
| BL051002S  | BAGUE LAITON 05,6X10X2 /SAC10            | MA60ABLA   |
| BL061102S  | BAGUE LAITON 6,1X11X2/SAC10              | GRL066BLC/D/G  |
| BL061302S  | BAGUE LAITON 6,7X13,5X2,8 /SAC10         | FR1106CD/G, FR14055CD/G, FR1406CD/G                                    |
| BL071302S  | BAGUE LAITON 7,1X13X2,5 /SAC10           | MA80ABL, MS80ABLA  |
| BL071303S  | BAGUE LAITON 7,1X13X3 /SAC10             | GRL087BLC/D/G  |
| BL071503S  | BAGUE LAITON 7,6X15X3 /SAC10             | FF autres dimensions   |
| BL071604S  | BAGUE LAITON 7,7X16,5X4,5 /SAC10         | PI146RD/G, PI166RD/G, PI1681CD/G, PI1981CD/G                           |
| BL081203S  | BAGUE LAITON 8,1X12X3 /SAC10             | GRD068BLC/D/G  |
| BL081503S  | BAGUE LAITON 8,1X15X3,5 /SAC10           | GPS06BLC/D/G, GPS07BLC/D/G? GPS08BLC/D/G                               |
| BL081603S  | BAGUE LAITON 8,1X16X3 /SAC10             | GRL108BLC/D/G  |
| BL081804S  | BAGUE LAITON 8,1X18X4,5 /SAC10           | PI147CD/G, PI3283OD/G, PI197CD/G                                       |
| BL082005S  | BAGUE LAITON 8,7X20X5 /SAC10             | PI168CD/G, PI228CD/G, PI198CD/G  |
| BL091604S  | BAGUE LAITON 9,1X16,6X4 /SAC10           | GPS09BLC/D/G, GPS10BLC/D/G   |
| BL091603S  | BAGUE LAITON 9,1X16X3 /SAC10             | MS120ABLA, MS135ABLA   |
| BL092105S  | BAGUE LAITON 9,1X21X5 /SAC10             | PI259CD/G  |
| BL091403S  | BAGUE LAITON CHT ROND 9,1X14X03,5 /SAC10 | GRD089BLC/D/G  |
| BL101804S  | BAGUE LAITON 10,1X18,5X4 /SAC10          | GPS12BLC/D/G, GPS14BLC/D/G   |
| BL111704S  | BAGUE LAITON 11,1X17X4 /SAC10            | GRD101BLC/D/G  |
| BL112004S  | BAGUE LAITON 11,1X20X4,5 /SAC10          | GPL10BLC/D/G, GPL12BLC/D/G   |
| BL112204S  | BAGUE LAITON 11,2X22X4 /SAC10            | GRL121BLC/D/G, GRL141BLC/D/G   |
| BL132004S  | BAGUE LAITON 13,2X20X4 /SAC10            | GRD123BLC/D/G  |
| BL142305S  | BAGUE LAITON 14,2X23X5 /SAC10            | MA180ABLA, MA200ABLA   |
| BL142605S  | BAGUE LAITON 14,2X26X5 /SAC10            | GPL14BLC/D/G, GPL16BLC/D/G, GP322BLC                                   |
| BL152205S  | BAGUE LAITON 15,2X22X5 /SAC10            | GRD125BLC/D/G, GRD145BLC/D/G   |
| BN071102S  | BAGUE NYLON 7,1X11,5X2 /SAC10            | SL851  |
| BN071302S  | BAGUE NYLON 7,7X13,5X2,5 /SAC10          | SL1001   |
| BB071607ZS | BUTEE BILLES 07,7X16,5X07 ZBL /SAC10     | PI146RD/G, PI166RD/G, PI1681CD/G, PI1981CD/G                           |
| BB081807S  | BUTEE BILLES 08,2X18,5X07 /SAC10         | PI147CD/G, PI3283OD/G, PI197CD/G                                       |
| BB082007ZS | BUTEE BILLES 08,7X20X07 ZBL /SAC10       | PI168CD/G, PI228CD/G, PI198CD/G  |
| BB091707S  | BUTEE BILLES 09,2X17,5X07 /SAC10         | MS120ABLA, MS135ABLA, MA100ABLA, MA120ABLA, GPS09BLC/D/G, GPS10BLC/D/G |
| BB102007S  | BUTEE BILLES 10,2X20X07 /SAC10           | GPS12BLC/D/G, GPS14BLC/D/G   |
| BB112007S  | BUTEE BILLES 11,3X20X07,2 /SAC10         | GPL10BLC/D/G, GPL12BLC/D/G   |
| BB142308S  | BUTEE BILLES 14,2X23X08 /SAC5            | MA180ABLA, MA200ABLA   |
| BB142508S  | BUTEE BILLES 14,3X25X08,5 /SAC5          | GPL14BLC/D/G, GPL16BLC/D/G, GP322BLC                                   |



## MALBLBB

Mallette de bagues et butées pour menuiseries acier

| Code    |  |   | Cat. |
|---------|--|---|------|
| MALBLBB |  | 1 | 2    |

## Accessoires, pattes à pointes

**BOUCHPM..** Bouchon polyéthylène

| Code       |  | Ød | ØD2 | e   |   | Cat. |
|------------|--|----|-----|-----|---|------|
| BOUCHPM80N |  | 7  | 13  | 6,5 | 1 | 2    |
| BOUCHPM12N |  | 9  | 15  | 6,4 | 1 | 2    |
| BOUCHPM14N |  | 11 | 16  | 5   | 1 | 2    |

**GRS6X100A** Graisseur

| Code      |         | L   | Ød |   | Cat. |
|-----------|---------|-----|----|---|------|
| GRS6X100A | Z.BLANC | 100 | M6 | 1 | 2    |

**VSL85100** Vis pour SANLAM®

| Code      |      |   | Cat.           |
|-----------|------|---|----------------|
| VSL851000 | BRUT | 1 | Nous consulter |

**PP..** Patte à pointe droite

| Code  |         | L   |     | Cat. |
|-------|---------|-----|-----|------|
| PP60  | Z.BLANC | 60  | 100 | 2    |
| PP80  | Z.BLANC | 80  | 100 | 2    |
| PP100 | Z.BLANC | 100 | 100 | 2    |
| PP120 | Z.BLANC | 120 | 100 | 2    |
| PP140 | Z.BLANC | 140 | 50  | 2    |

**PP..** Patte à pointe coudée

| Code    |         | L   |     | Cat. |
|---------|---------|-----|-----|------|
| PP60ZC  | Z.BLANC | 60  | 100 | 2    |
| PP80ZC  | Z.BLANC | 80  | 100 | 2    |
| PP100ZC | Z.BLANC | 100 | 100 | 2    |
| PP120ZC | Z.BLANC | 120 | 100 | 2    |
| PP140ZC | Z.BLANC | 140 | 50  | 2    |