

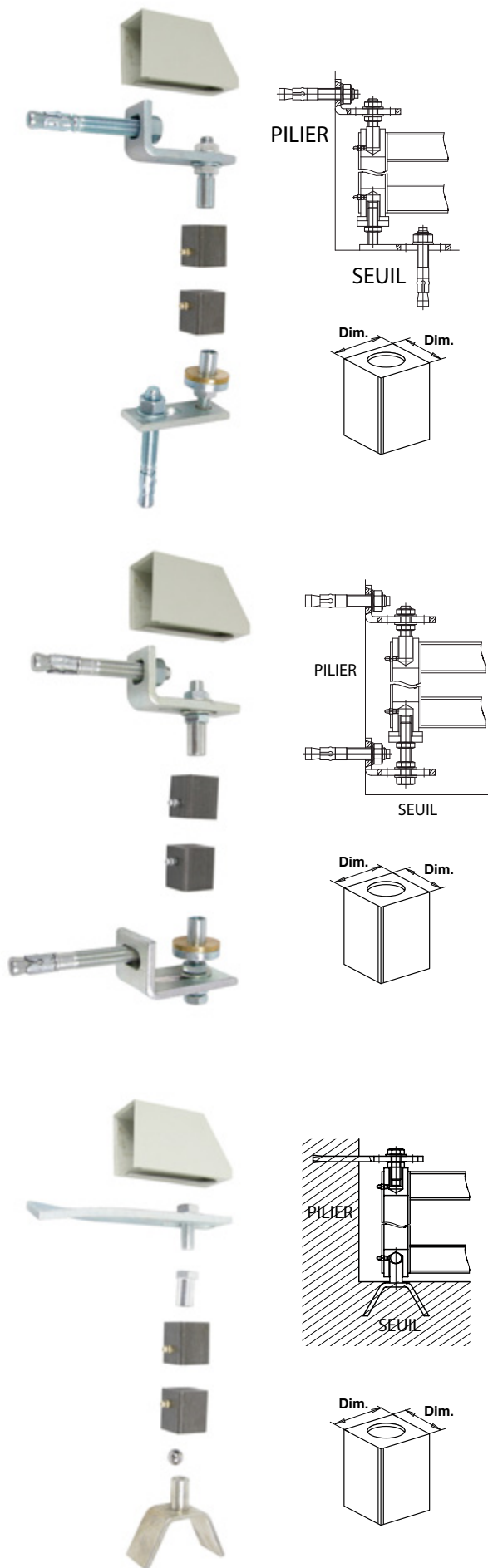


Caractéristiques



Faure et Fils® vous propose toute une gamme d'articulation de portails.

Le choix important de modèles ainsi que leurs possibilités de réglages leurs permettent de s'adapter à tous types de poses.



Disponibles pour portails bois ou métalliques.





PIVOT1.. Pivot 100 à cheviller

Code		Dim.	Charge max /vantail		Cat.
PIEM1040	BRUT	40x40	150 kg	1	2
PIVOT150	BRUT	50x50	150 kg	1	2

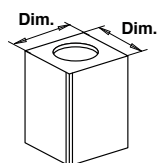
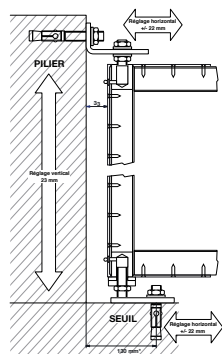
PIEM30.. Pivot 300 à cheviller

Code		Dim.	Charge max /vantail		Cat.
PIEM3040	BRUT	40x40	150 kg	1	2
PIEM3050	BRUT	50x50	150 kg	1	2

PIEM40.. Pivot 400 à sceller

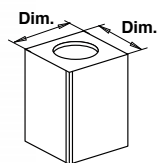
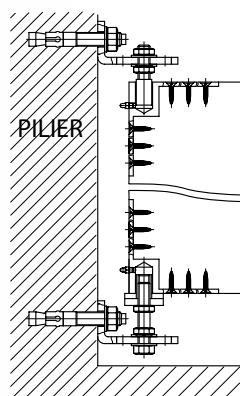
Code		Dim.	Charge max /vantail		Cat.
PIEM4040	BRUT	40x40	150 kg	1	2
PIEM4050	BRUT	50x50	150 kg	1	2

Ferrures pour portails bois



PIVOT500 Pivot 500

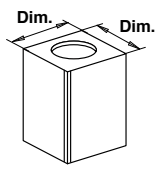
Code	Color	Dim.	Charge max /vantail	Icon	Cat.
PIVOT500	BRUT	40x40	150 kg	1	4



PIVOT510 Pivot 510

Code	Color	Dim.	Charge max /vantail	Icon	Cat.
PIVOT510	BRUT	40x40	150 kg	1	4

Ferrures pour portails bois



PIVOT8.. Pivot 800 avec chevilles

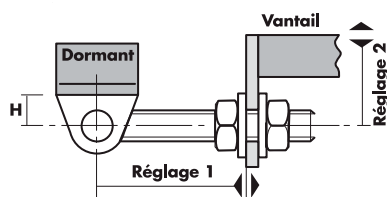
Code		Dim.		Cat.
PIVOT840	BRUT	40x40	1	2
PIVOT850	BRUT	50x50	1	2



A180000 Capot pour pivots à sceller ou à chevilla

Code		L	l	H		Cat.
A180000	BRUT	105	40	61	1	2

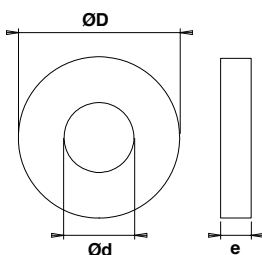
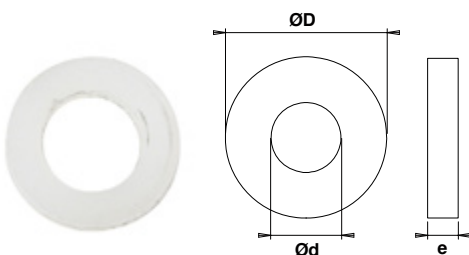
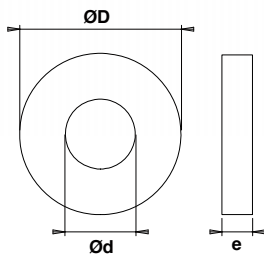
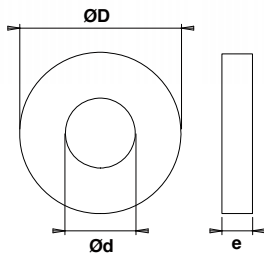
Ferrures pour portails métalliques



CL000.. IDEFIX® - Articulation de portail - Bague laiton

Code		H	L fileté	Ø Tige fileté	Dim. bague laiton	Réglage E1	Réglage E2	Charge max /Pivot		Cat.
CL00000	BRUT	25	80	12	12x22x8	50	13	50 kg	1	2
CL00010	BRUT	28	90	16	16x30x9	50	16	60 kg	1	2
CL00020	BRUT	36	110	20	20x38x9	60	22	75 kg	1	2
CL00030	BRUT	36	140	24	24x46x9	80	22	85 kg	1	2

Bagues



BL.. Bague laiton

Code		Ød	ØD	e		Cat.
BL051002S	BRUT	5,6	10	2	10	2
BL061102S	BRUT	6,1	11	2	10	2
BL061302S	BRUT	6,7	13,5	2,8	10	2
BL071302S	BRUT	7,1	13	2,5	10	2
BL071303S	BRUT	7,1	13	3	10	2
BL071503S	BRUT	7,6	15	3	10	2
BL071604S	BRUT	7,7	16,5	4,5	10	2
BL081203S	BRUT	8,1	12	3	10	2
BL081503S	BRUT	8,1	15	3,5	10	2
BL081603S	BRUT	8,1	16	3	10	2
BL081804S	BRUT	8,1	18	4,5	10	2
BL082005S	BRUT	8,7	20	5	10	2
BL091403S	BRUT	9,1	14	3,5	10	2
BL091603S	BRUT	9,1	16	3	10	2
BL091604S	BRUT	9,1	16,6	4	10	2
BL092105S	BRUT	9,1	21	5	10	2
BL111704S	BRUT	11,1	17	4	10	2
BL101804S	BRUT	10,1	18,5	4	10	2
BL112004S	BRUT	11,1	20	4,5	10	2
BL112204S	BRUT	11,2	22	4	10	2
BL132004S	BRUT	13,2	20	4	10	2
BL142305S	BRUT	14,2	23	5	10	2
BL142605S	BRUT	14,2	26	5	10	2
BL152205S	BRUT	15,2	22	5	10	2

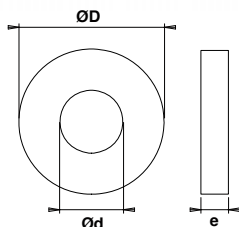
BIO.. Bague inox

Code		Ød	ØD	e		Cat.
BI061002S	INOX	6,15	10	2	10	2
BI071302S	INOX	7,1	13	2,5	10	2
BI081403S	INOX	8,2	14	3	10	2
BI091603S	INOX	9,1	16	3	10	2

BN071.. Bague nylon

Code		Ød	ØD	e		Cat.
BN071102S	BRUT	7,1	11,5	2	10	2
BN071302S	BRUT	7,7	13,5	2,5	10	2

Bagues, butées



BB.. Butée à billes

Code		Ød	ØD	e		Cat.
BB071607ZS	Z.BLANC	7,7	16,5	7	10	2
BB081807S	Z.BLANC	8,2	18	7	10	2
BB082007ZS	Z.BLANC	8,7	20	7	10	2
BB091707S	Z.BLANC	9,2	17,5	7	10	2
BB102007S	Z.BLANC	10,2	20	7	10	2
BB112007S	Z.BLANC	11,3	20	7,2	10	2
BB142308S	Z.BLANC	14,2	23	8	5	2
BB142508S	Z.BLANC	14,3	25	8,5	5	2

Code	DESIGNATION	PRODUITS CORRESPONDANTS
BI061002S	BAGUE INOX 6,15X10X2 /SAC10	MA60IBII
BI071302S	BAGUE INOX 7,1X13X2,5 /SAC10	MA80IBII
BI081403S	BAGUE INOX 8,2X14X3 /SAC10	FF11407CD/G
BI091603S	BAGUE INOX 9,1X16X3 /SAC10	MA100IBII, MA120IBII
BL051002S	BAGUE LAITON 05,6X10X2 /SAC10	MA60ABLA
BL061102S	BAGUE LAITON 6,1X11X2/SAC10	GRL066BLC/D/G
BL061302S	BAGUE LAITON 6,7X13,5X2,8 /SAC10	FR1106CD/G, FR14055CD/G, FR1406CD/G
BL071302S	BAGUE LAITON 7,1X13X2,5 /SAC10	MA80ABL, MS80ABLA
BL071303S	BAGUE LAITON 7,1X13X3 /SAC10	GRL087BLC/D/G
BL071503S	BAGUE LAITON 7,6X15X3 /SAC10	FF autres dimensions
BL071604S	BAGUE LAITON 7,7X16,5X4,5 /SAC10	PI146RD/G, PI166RD/G, PI1681CD/G, PI1981CD/G
BL081203S	BAGUE LAITON 8,1X12X3 /SAC10	GRD068BLC/D/G
BL081503S	BAGUE LAITON 8,1X15X3,5 /SAC10	GPS06BLC/D/G, GPS07BLC/D/G? GPS08BLC/D/G
BL081603S	BAGUE LAITON 8,1X16X3 /SAC10	GRL108BLC/D/G
BL081804S	BAGUE LAITON 8,1X18X4,5 /SAC10	PI147CD/G, PI3283OD/G, PI197CD/G
BL082005S	BAGUE LAITON 8,7X20X5 /SAC10	PI168CD/G, PI228CD/G, PI198CD/G
BL091604S	BAGUE LAITON 9,1X16,6X4 /SAC10	GPS09BLC/D/G, GPS10BLC/D/G
BL091603S	BAGUE LAITON 9,1X16X3 /SAC10	MS120ABLA, MS135ABLA
BL092105S	BAGUE LAITON 9,1X21X5 /SAC10	PI259CD/G
BL091403S	BAGUE LAITON CHT ROND 9,1X14X03,5 /SAC10	GRD089BLC/D/G
BL101804S	BAGUE LAITON 10,1X18,5X4 /SAC10	GPS12BLC/D/G, GPS14BLC/D/G
BL111704S	BAGUE LAITON 11,1X17X4 /SAC10	GRD101BLC/D/G
BL112004S	BAGUE LAITON 11,1X20X4,5 /SAC10	GPL10BLC/D/G, GPL12BLC/D/G
BL112204S	BAGUE LAITON 11,2X22X4 /SAC10	GRL121BLC/D/G, GRL141BLC/D/G
BL132004S	BAGUE LAITON 13,2X20X4 /SAC10	GRD123BLC/D/G
BL142305S	BAGUE LAITON 14,2X23X5 /SAC10	MA180ABLA, MA200ABLA
BL142605S	BAGUE LAITON 14,2X26X5 /SAC10	GPL14BLC/D/G, GPL16BLC/D/G, GP322BLC
BL152205S	BAGUE LAITON 15,2X22X5 /SAC10	GRD125BLC/D/G, GRD145BLC/D/G
BN071102S	BAGUE NYLON 7,1X11,5X2 /SAC10	SL851
BN071302S	BAGUE NYLON 7,7X13,5X2,5 /SAC10	SL1001
BB071607ZS	BUTEE BILLES 07,7X16,5X07 ZBL /SAC10	PI146RD/G, PI166RD/G, PI1681CD/G, PI1981CD/G
BB081807S	BUTEE BILLES 08,2X18,5X07 /SAC10	PI147CD/G, PI3283OD/G, PI197CD/G
BB082007ZS	BUTEE BILLES 08,7X20X07 ZBL /SAC10	PI168CD/G, PI228CD/G, PI198CD/G
BB091707S	BUTEE BILLES 09,2X17,5X07 /SAC10	MS120ABLA, MS135ABLA, MA100ABLA, MA120ABLA, GPS09BLC/D/G, GPS10BLC/D/G
BB102007S	BUTEE BILLES 10,2X20X07 /SAC10	GPS12BLC/D/G, GPS14BLC/D/G
BB112007S	BUTEE BILLES 11,3X20X07,2 /SAC10	GPL10BLC/D/G, GPL12BLC/D/G
BB142308S	BUTEE BILLES 14,2X23X08 /SAC5	MA180ABLA, MA200ABLA
BB142508S	BUTEE BILLES 14,3X25X08,5 /SAC5	GPL14BLC/D/G, GPL16BLC/D/G, GP322BLC



MALBLBB

Mallette de bagues et butées pour menuiseries acier

Code			Cat.
MALBLBB		1	2

Accessoires, pattes à pointes

**BOUCHPM..** Bouchon polyéthylène

Code		Ød	ØD2	e		Cat.
BOUCHPM80N		7	13	6,5	1	2
BOUCHPM12N		9	15	6,4	1	2
BOUCHPM14N		11	16	5	1	2

**GRS6X100A0** Graisseur

Code		L	Ød		Cat.
GRS6X100A0	Z.BLANC	100	M6	1	2

**VSL85100** Vis pour SANLAM®

Code			Cat.
VSL851000	BRUT	1	Nous consulter

**PP..** Patte à pointe droite

Code		L		Cat.
PP60	Z.BLANC	60	100	2
PP80	Z.BLANC	80	100	2
PP100	Z.BLANC	100	100	2
PP120	Z.BLANC	120	100	2
PP140	Z.BLANC	140	50	2

**PP..** Patte à pointe coudée

Code		L		Cat.
PP60ZC	Z.BLANC	60	100	2
PP80ZC	Z.BLANC	80	100	2
PP100ZC	Z.BLANC	100	100	2
PP120ZC	Z.BLANC	120	100	2
PP140ZC	Z.BLANC	140	50	2