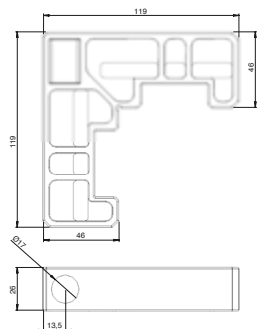




**PIÈCES D'ASSEMBLAGE
ET ACCESSOIRES**

Equerres d'assemblage coupe 45°



Equerre simple aluminium L440 mm

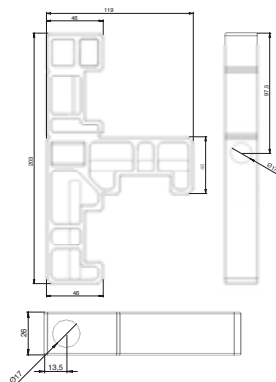
Code



C17111

BRUT

1



Equerre double aluminium coupe 45° L448 mm

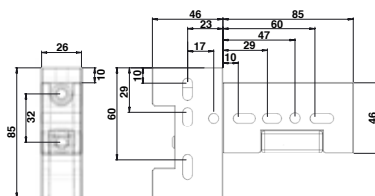
Code



C17113

BRUT

1



Equerre complète aluminium pour tube 50x30

Code

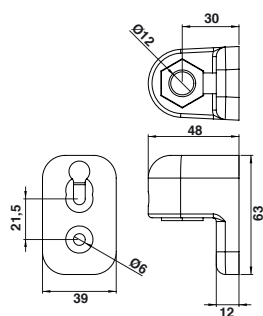


C17134

BRUT

1

Avec usinage pour paumelle zamak.



Paumelle aluminium avec bague Ø12 polyamide

Code



C14420

BRUT

1

C14420NO

9005

1

C14420BL

9016

1

C14420BL2

9010

1

Bague polyamide Ø12 mm - H 22 mm.



Pièce de blocage aluminium avec vis et écrou M10

Code

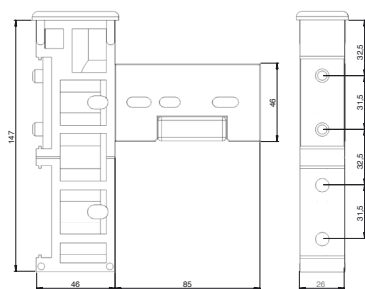


C17010

BRUT

1

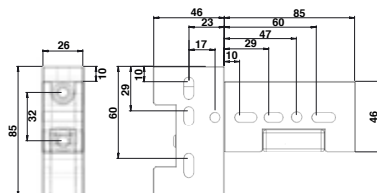
Equerres d'assemblage coupe droite



Equerre complète aluminium coupe droite

Code		
C17123		1
C17121		1

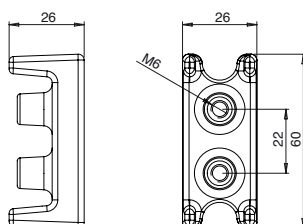
Pièces d'assemblage pour cadre intégré



Equerre complète aluminium pour cadre intégré coupe droite

Code		
C17134E	BRUT	1

Tarudée.



Insert 30x30 aluminium

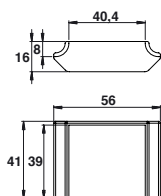
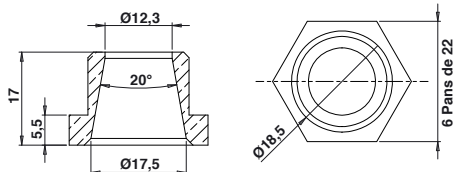
Code		
C17138E	BRUT	1



Kit fixation pour paumelle sur insert

Code		
C14418	BRUT	1

Accessoires



Bouchon Ø7 composite

Code		
C17021	<input type="text"/>	100
C17051	<input type="text"/>	100

Compatible avec la pièce de blocage C17010 P.119.

Bague Ø12 H13 mm laiton

Code		
C17011	LAITON	1

Bague Ø12 H13 mm composite

Code		
C17017	<input type="text"/>	1

Bague laiton conique

Code		
C250400	LAITON	1

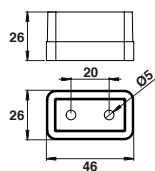
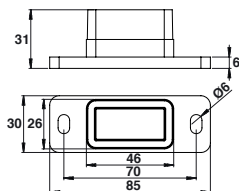
Rondelle isolante composite

Code		
C214110	<input type="text"/>	50

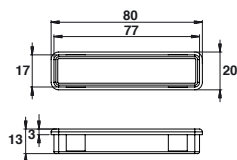
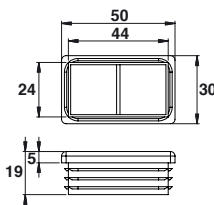
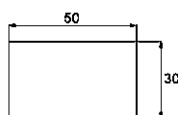
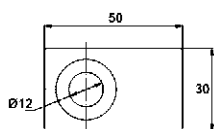
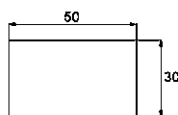
Pièce de raccordement pour 40x40 mm sur tube 30x30 mm

Code		
C18103	9016	1
C18109	9010	1

Accessoires



Embouts



Manchon 50x30 aluminium

Code



C18152 9016 1

C18151 9010 1

Manchon invisible aluminium

Code



C18153 BRUT 1

Embout simple composite

Code



I130 54 5015 9016 10

Embout percé Ø12 composite

Code



I131 54 5015 9016 10

Embout simple kit aluminium

Code



I130 54 5019 9016 10

Embout 50x30 composite

Code



C18104 20

Embout 80x20 composite

Code



C18101 1

C18108 9010 1